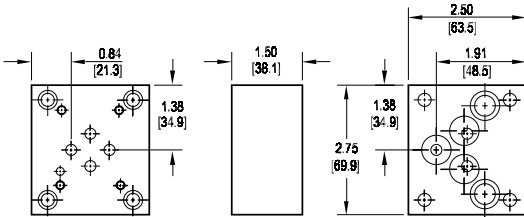
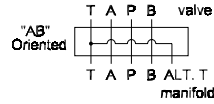


# Valve Adaptors for D05 Manifolds

## Adapt D03 valve to D05 manifold • AB oriented

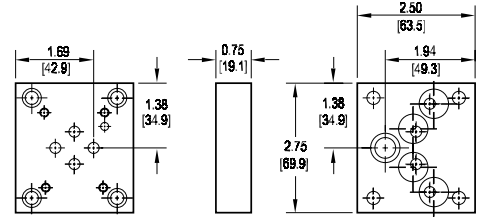
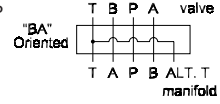
Valve mtg: UNC #10-24 x 0.50 DP or  
Metric M5-0.8mm ISO 6H x [12.7] DP  
Adaptor mounting hardware is supplied.  
See page 98 for itemized list.



This adaptor permits the installation of a D03 valve on a D05 manifold. This adaptor, unlike \*D03D05VABA\*, properly orients the A & B ports on the manifold to the respective valve solenoids.

## Adapt D03 valve to D05 manifold • BA oriented

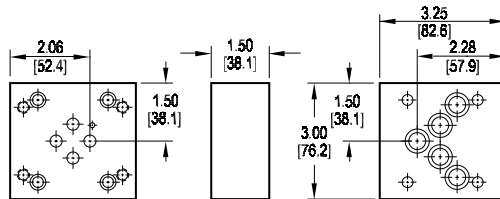
Valve mtg: UNC #10-24 x 0.44 DP or  
Metric M5 x 0.8mm ISO 6H x [11] DP  
Adaptor mounting hardware is supplied.  
See page 98 for itemized list.



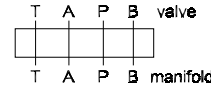
This adaptor permits the installation of a D03 valve on a D05 manifold. This adaptor, while low in cost, does not orient the A & B ports on the manifold to the respective valve solenoids.

## Adapt S04 valve to D05 manifold • AB oriented

Valve mtg: UNC 0.31-18 x 0.63 DP or  
Metric M8 x 1.25mm ISO 6H x [15.9] DP  
Adaptor mounting hardware is supplied.  
See page 98 for itemized list.



This adaptor properly orients the A & B ports on the manifold to the respective valve solenoids.



Specifications, descriptions, and dimensional data are subject to correction or change without notice or incurring obligation. Download latest catalog page revisions at [www.daman.com](http://www.daman.com).

# Ordering Information

Material	Valve Pattern	Manifold Pattern	Product Type	Port Orientation	Bolt Threads																																		
<table border="1"> <thead> <tr> <th colspan="2">Material</th> </tr> </thead> <tbody> <tr> <td><b>A</b></td> <td>Aluminum - 6061-T6 3000† psi • 20.7 MPa</td> </tr> <tr> <td><b>D</b></td> <td>Ductile Iron - D4512 5000† psi • 34.5 MPa</td> </tr> <tr> <td><b>N</b></td> <td>Electroless Nickel Coated Ductile Iron - D4512 5000† psi • 34.5 MPa</td> </tr> </tbody> </table> <p>† Working pressure should be considered in accordance with ISO 4413 to determine appropriate material type.</p>	Material		<b>A</b>	Aluminum - 6061-T6 3000† psi • 20.7 MPa	<b>D</b>	Ductile Iron - D4512 5000† psi • 34.5 MPa	<b>N</b>	Electroless Nickel Coated Ductile Iron - D4512 5000† psi • 34.5 MPa	<table border="1"> <thead> <tr> <th colspan="2">Valve Pattern</th> </tr> </thead> <tbody> <tr> <td><b>D03</b></td> <td>ISO 4401-03-02 NFPA T3.5.1-D03 See Tech Information</td> </tr> <tr> <td><b>S04</b></td> <td>ISO 10372-04-04 Daman standard S04 See Tech Information</td> </tr> </tbody> </table>	Valve Pattern		<b>D03</b>	ISO 4401-03-02 NFPA T3.5.1-D03 See Tech Information	<b>S04</b>	ISO 10372-04-04 Daman standard S04 See Tech Information	<table border="1"> <thead> <tr> <th colspan="2">Manifold Pattern</th> </tr> </thead> <tbody> <tr> <td><b>D05</b></td> <td>ISO 4401-05-04 NFPA T3.5.1-D05 See Tech Information</td> </tr> </tbody> </table>	Manifold Pattern		<b>D05</b>	ISO 4401-05-04 NFPA T3.5.1-D05 See Tech Information	<table border="1"> <thead> <tr> <th colspan="2">Product Type</th> </tr> </thead> <tbody> <tr> <td><b>VA</b></td> <td>Valve Adaptor</td> </tr> </tbody> </table>	Product Type		<b>VA</b>	Valve Adaptor	<table border="1"> <thead> <tr> <th colspan="2">Port Orientation</th> </tr> </thead> <tbody> <tr> <td><b>AB</b></td> <td>A<sub>v</sub> common to A<sub>m</sub> B<sub>v</sub> common to B<sub>m</sub></td> </tr> <tr> <td><b>BA</b></td> <td>B<sub>v</sub> common to A<sub>m</sub> A<sub>v</sub> common to B<sub>m</sub> D03 valve pattern only.</td> </tr> </tbody> </table>	Port Orientation		<b>AB</b>	A <sub>v</sub> common to A <sub>m</sub> B <sub>v</sub> common to B <sub>m</sub>	<b>BA</b>	B <sub>v</sub> common to A <sub>m</sub> A <sub>v</sub> common to B <sub>m</sub> D03 valve pattern only.	<table border="1"> <thead> <tr> <th colspan="2">Bolt Threads</th> </tr> </thead> <tbody> <tr> <td colspan="2">Omit for inch (UNC) bolt kit.</td> </tr> <tr> <td><b>M</b></td> <td>Metric (ISO 6H) bolt kit</td> </tr> </tbody> </table>	Bolt Threads		Omit for inch (UNC) bolt kit.		<b>M</b>	Metric (ISO 6H) bolt kit
Material																																							
<b>A</b>	Aluminum - 6061-T6 3000† psi • 20.7 MPa																																						
<b>D</b>	Ductile Iron - D4512 5000† psi • 34.5 MPa																																						
<b>N</b>	Electroless Nickel Coated Ductile Iron - D4512 5000† psi • 34.5 MPa																																						
Valve Pattern																																							
<b>D03</b>	ISO 4401-03-02 NFPA T3.5.1-D03 See Tech Information																																						
<b>S04</b>	ISO 10372-04-04 Daman standard S04 See Tech Information																																						
Manifold Pattern																																							
<b>D05</b>	ISO 4401-05-04 NFPA T3.5.1-D05 See Tech Information																																						
Product Type																																							
<b>VA</b>	Valve Adaptor																																						
Port Orientation																																							
<b>AB</b>	A <sub>v</sub> common to A <sub>m</sub> B <sub>v</sub> common to B <sub>m</sub>																																						
<b>BA</b>	B <sub>v</sub> common to A <sub>m</sub> A <sub>v</sub> common to B <sub>m</sub> D03 valve pattern only.																																						
Bolt Threads																																							
Omit for inch (UNC) bolt kit.																																							
<b>M</b>	Metric (ISO 6H) bolt kit																																						